

**Zm750**

**Bisagra 75mm**

75 mm



**Zm900**

**Bisagra 90mm**

90 mm



**ZM3D0**

**Bisagra 3D**



**H060**

**Manilla Guarnición Plastico**



**H070**

**Plastico Manilla Puerta (WC)**



**H020**

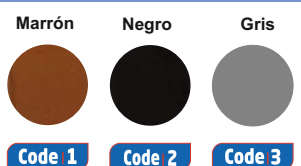
**Aluminium Door Handle**



**H030**

**Aluminio Manilla Puerta para Cilindro**

**Colores**



Henry Ford 1420 Maipu/Santiago/Chile

**H080**

**Manilla plástica Ventana proyectantenilla**



**H010**

**Manilla aluminio Ventana proyectante**



**H1200**

**Manilla Estrecha Plastica**



**H1100**

**Manilla Estrecha aluminio**



**H040**

**Manilla con llave**

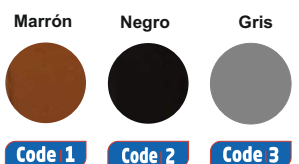


**H050**

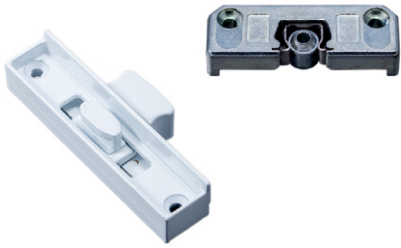
**Manilla doble con llave**



### Colores



Henry Ford 1420 Maipu/Santiago/Chile



**SPK0**

**Cierre Oculto Corredera**

**H090**

**Manilla Oculta**



**VSPC0**

**Plastic Transom Locked Adjust table**

**H100**

**Tirador**



**SST0**

**Corta Chiflón/ Tope Estanco**

## Colores

Marrón

Negro

Gris



Code 1

Code 2

Code 3

**ALEA0**

**Zapata**

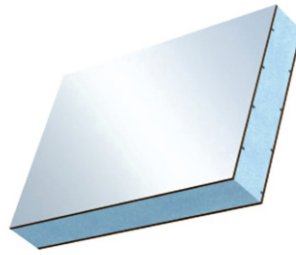


Henry Ford 1420 Maipu/Santiago/Chile

**PNL200**

**Panel Sandwich**

20 mm



**PNL240**

**PVC Panel Emparedado**

24 mm

**HOKKS76000**

**Tapa Batiente**



**HOKKS60700**

**Tapa Batiente**

**KKT0**

**Tope/Resbalon**



**Mt120**

**Tope Amortiguador**

**MTBL0**

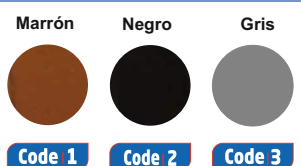
**Tapa Tornillo**



**RKLM0**

**Plumón PVC**

**Colores**



Henry Ford 1420 Maipu/Santiago/Chile

**L0135**

**Cremona para Puerta**

35 mm



**L0128**

**Cremona para Puerta**

28 mm

**L0235**

**Llave Puerta (WC)**

35 mm



**L0228**

**Llave Puerta (WC)**

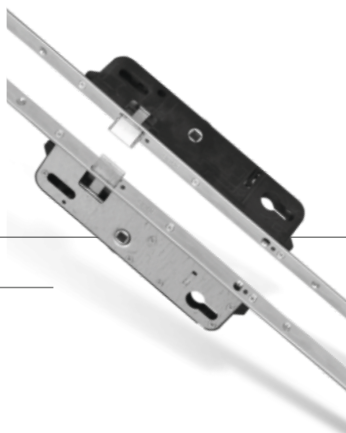
28 mm



**Br90**

**Cilindro**

90 mm



**KKISP180**

**Cremona puerta 160-180**

160 - 180 Cm (Barrel System )

**KKISP028**

**Cremona puerta**

### Simple Espaglette

15 AXIS CODE	22 AXIS CODE	PRODUCT NAME	PCS
ISP 30-15	ISP 30-22	CREMONA 30 CM 22 AXIS	40
ISP 40-15	ISP 40-22	CREMONA 40 CM 22 AXIS	40
ISP 60-15	ISP 60-22	CREMONA 60 CM 22 AXIS	40
ISP 80-15	ISP 80-22	CREMONA 80 CM 22 AXIS	40
ISP 100-15	ISP 100-22	CREMONA 100 CM 22 AXIS	40
ISP 120-15	ISP 120-22	CREMONA 120 CM 22 AXIS	40
ISP 140-15	ISP 140-22	CREMONA 140 CM 22 AXIS	25
ISP 160-15	ISP 160-22	CREMONA 160 CM 22 AXIS	25
ISP 180-15	ISP 180-22	CREMONA 180 CM 22 AXIS	25

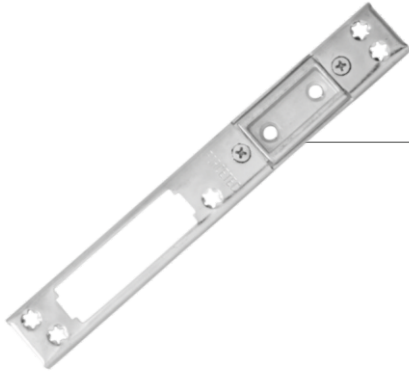


### Espaglette Couissant Sliding

CODE	PRODUCT NAME	PCS
SiSP 30	30 cm Sliding Isp (2 Clutch)	40
SiSP 40	40 cm Sliding Isp (2 Clutch)	40
SiSP 60	60 cm Sliding Isp (2 Clutch)	40
SiSP 80	80 cm Sliding Isp (2 Clutch)	40
SiSP 100	100 cm Sliding Isp (2 Clutch)	40
SiSP 120	120 cm Sliding Isp (2 Clutch)	40
SiSP 140	140 cm Sliding Isp (2 Clutch)	25
SiSP 160	160 cm Sliding Isp (2 Clutch)	25
SiSP 180	180 cm Sliding Isp (2 Clutch)	25

Henry Ford 1420 Maipu/Santiago/Chile





**KK01**

**Cerradero Puerta largo**

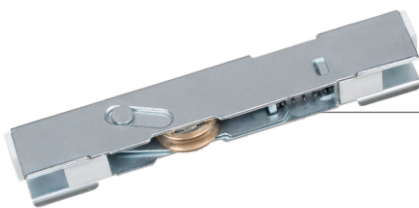
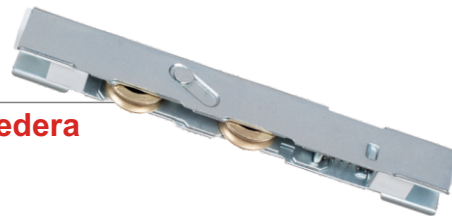
**KK02**

**Cerradero Puerta**



**SR01**

**Carro Ajustable Doble Rueda Corredera**

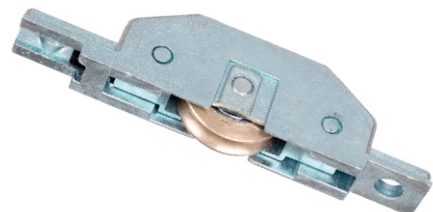


**SR02**

**Carro Ajustable Una Rueda Corredera**

**SR03**

**Carro Corredera Grande**



Henry Ford 1420 Maipu/Santiago/Chile

**KIK1**

**Cerradero Proyectante**



**KIK2**

**Response Of Espagnolette**

**CKIK**

**Response Of Espagnolette**



**CIK1**

**Cerradero Corredera**

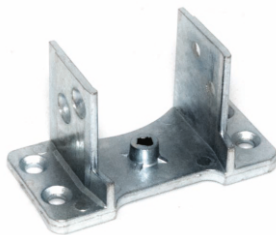
**CIK2**

**Enganche Corredera**



## STELL FIXING

CODE	PRODUCT NAME
OKSC41	41 mm Stell Fixing
OKSC35	35 mm Stell Fixing
OKSC45	45 mm Stell Fixing



## ZINC FIXING

CODE	PRODUCT NAME
OKZM41	41 mm Zinc Fixing
OKZM35	35 mm Zinc Fixing
OKZM45	45 mm Zinc Fixing



## STELL FIXING

CODE	PRODUCT NAME
OKUSC41	41 mm Stell Fixing
OKUSC35	35 mm Stell Fixing
OKSUC45	45 mm Stell Fixing

Henry Ford 1420 Maipu/Santiago/Chile

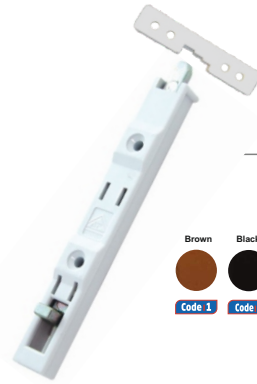
## FSZ

Picaporte Metal Doble Hoja Corredera



## FSZ10

Pasador



## FSS

Picaporte Zinc Doble Ventana Corredera

## VS13

Limitador De Apertura

13 cm

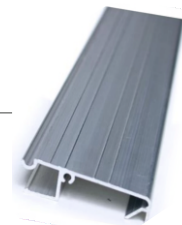


## OSS

Brazo proyectante

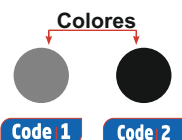
## ALE

De Aluminio y Puerta Umbral



## GSKT

Burlete



Henry Ford 1420 Maipu/Santiago/Chile



CPKT

Cuña

65 mm



ST02

Tapa Desagüe

GL01

Cuña para vidrio



GL02

Calzos

PKT01

de Topes Transparentes En Forma de Ocho

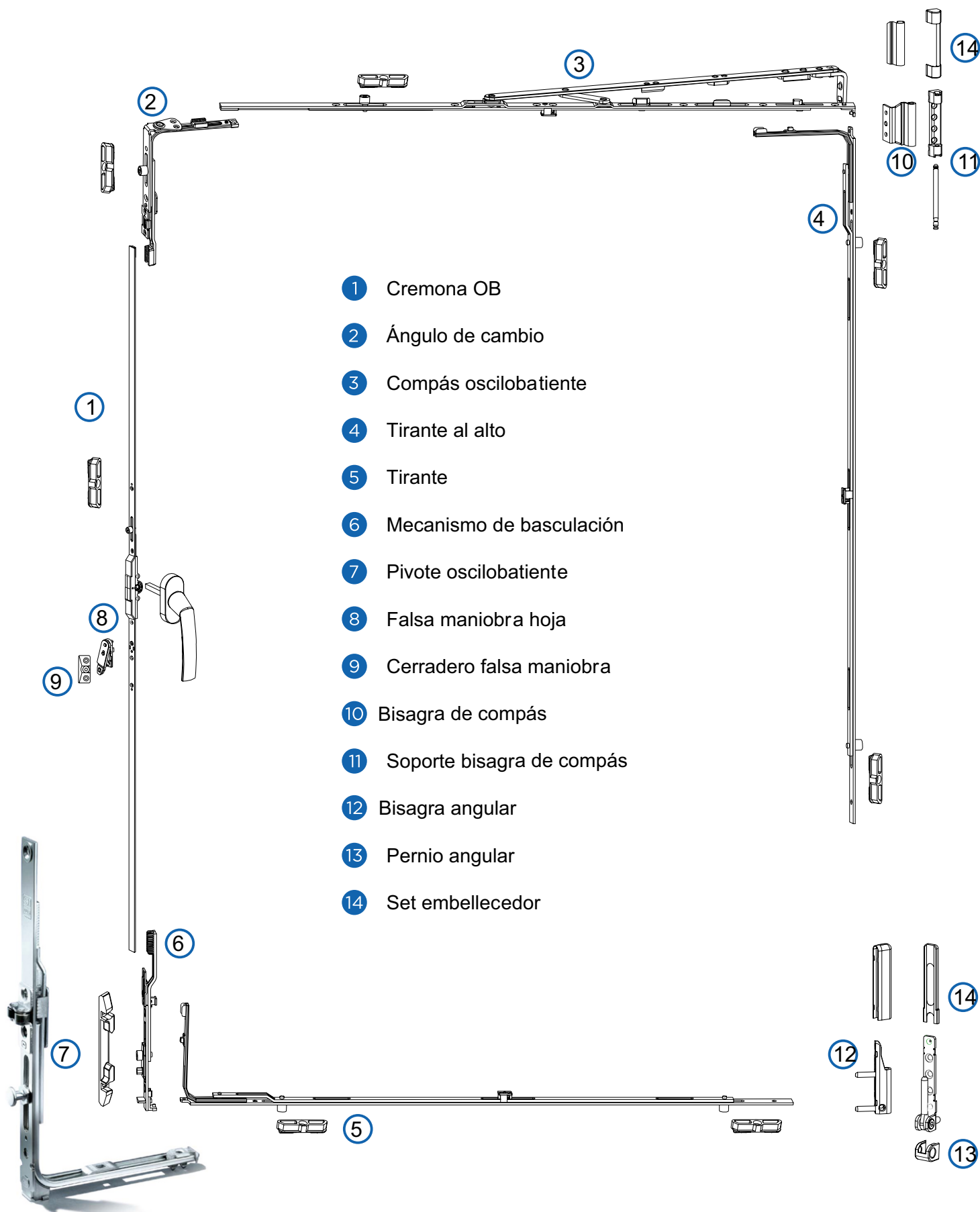


TF01

Teflón para Soldar

Henry Ford 1420 Maipu/Santiago/Chile





- 1 Cremona OB
- 2 Ángulo de cambio
- 3 Compás oscilobatiente
- 4 Tirante al alto
- 5 Tirante
- 6 Mecanismo de basculación
- 7 Pivote oscilobatiente
- 8 Falsa maniobra hoja
- 9 Cerradero falsa maniobra
- 10 Bisagra de compás
- 11 Soporte bisagra de compás
- 12 Bisagra angular
- 13 Pernio angular
- 14 Set embellecedor

Henry Ford 1420 Maipu/Santiago/Chile





Tornillo Auto perforante		
Código	Descripción	Caja
V-YHB 3913	3,9 x 13 mmYHB MUV	15000
V-YHB 3916	3,9 x 16 mmYHB MUV	15000
V-YHB 3919	3,9 x 19 mmYHB MUV	15000
V-YHB 3922	3,9 x 22 mmYHB MUV	13000
V-YHB 3925	3,9 x 25 mmYHB MUV	11000
V-YHB 3932	3,9 x 32 mmYHB MUV	13000
V-YHB 3938	3,9 x 38 mmYHB MUV	13000
V-YHB 4213	4,2 x 13 mmYHB MUV	11000
V-YHB 4216	4,2 x 16 mmYHB MUV	11000
V-YHB 4219	4,2 x 19 mmYHB MUV	11000
V-YHB 4222	4,2 x 22 mmYHB MUV	11000
V-YHB 4225	4,2 x 25 mmYHB MUV	11000
V-YHB 4232	4,2 x 32 mmYHB MUV	10000
V-YHB 4238	4,2 x 38 mmYHB MUV	8000
V-YHB 4245	4,2 x 45 mmYHB MUV	6000
V-YHB 4250	4,2 x 50 mmYHB MUV	6000
V-YHB 4260	4,2 x 60 mmYHB MUV	11000
V-YHB 4813	4,8 x 13 mmYHB MUV	5000
V-YHB 4816	4,8 x 16 mmYHB MUV	5000
V-YHB 4819	4,8 x 19 mmYHB MUV	5000
V-YHB 4822	4,8 x 22 mmYHB MUV	5000
V-YHB 4825	4,8 x 25 mmYHB MUV	5000
V-YHB 4832	4,8 x 32 mmYHB MUV	5000
V-YHB 4838	4,8 x 38 mmYHB MUV	5000
V-YHB 4845	4,8 x 45 mmYHB MUV	5000
V-YHB 4850	4,8 x 50 mmYHB MUV	5000
V-YHB 4860	4,8 x 60 mmYHB MUV	4000
V-YHB 4870	4,8 x 70 mmYHB MUV	3000
V-YHB 4880	4,8 x 80 mmYHB MUV	1500



Tornillo Auto perforante		
Código	Descripción	Caja
V-YSB 3913	3,9 x 13 mmYSB MUV	15000
V-YSB 3916	3,9 x 16 mmYSB MUV	15000
V-YSB 3919	3,9 x 19 mmYSB MUV	15000
V-YSB 3922	3,9 x 22 mmYSB MUV	13000
V-YSB 3925	3,9 x 25 mmYSB MUV	11000
V-YSB 3932	3,9 x 32 mmYSB MUV	13000
V-YSB 3938	3,9 x 38 mmYSB MUV	13000
V-YSB 4213	4,2 x 13 mmYSB MUV	11000
V-YSB 4216	4,2 x 16 mmYSB MUV	11000
V-YSB 4219	4,2 x 19 mmYSB MUV	11000
V-YSB 4222	4,2 x 22 mmYSB MUV	11000
V-YSB 4225	4,2 x 25 mmYSB MUV	11000
V-YSB 4232	4,2 x 32 mmYSB MUV	10000
V-YSB 4238	4,2 x 38 mmYSB MUV	8000
V-YSB 4245	4,2 x 45 mmYSB MUV	6000
V-YSB 4250	4,2 x 50 mmYSB MUV	6000
V-YSB 4260	4,2 x 60 mmYSB MUV	11000
V-YSB 4813	4,8 x 13 mmYSB MUV	5000
V-YSB 4816	4,8 x 16 mmYSB MUV	5000
V-YSB 4819	4,8 x 19 mmYSB MUV	5000
V-YSB 4822	4,8 x 22 mmYSB MUV	5000
V-YSB 4825	4,8 x 25 mmYSB MUV	5000
V-YSB 4832	4,8 x 32 mmYSB MUV	5000
V-YSB 4836	4,8 x 38 mmYSB MUV	5000
V-YSB 4845	4,8 x 45 mmYSB MUV	5000
V-YSB 4850	4,8 x 50 mmYSB MUV	5000
V-YSB 4860	4,8 x 60 mmYSB MUV	4000
V-YSB 4870	4,8 x 70 mmYSB MUV	3000
V-YSB 4880	4,8 x 80 mmYSB MUV	1500



Tornillo punta aguja		
Código	Descripción	Caja
V-SD 39193,9 x 19 mmYHB Espagnolette Tornillo		15000
V-SD 39223,9 x 22 mmYHB Espagnolette Tornillo		12000
V-SD 39253,9 x 25 mmYHB Espagnolette Tornillo		13000
V-SD 39323,9 x 32 mmYHB Espagnolette Tornillo		13000
V-SD 42384,2 x 38 mmYHB Espagnolette Tornillo		6000



Tornillo Amo 3		
Código	Descripción	Caja
V-BLDX 7880	7,8 x 80 mmBULDEX	15000
V-BLDX 75100	7,5 x 100 mmBULDEX	12000
V-BLDX 75120	7,5 x 120 mmBULDEX	13000
V-BLDX 75150	7,5 x 150 mmBULDEX	13000

**Alto Rendimiento**

**Durabilidad Extra**

**Larga Vida**

Henry Ford 1420 Maipu/Santiago/Chile

